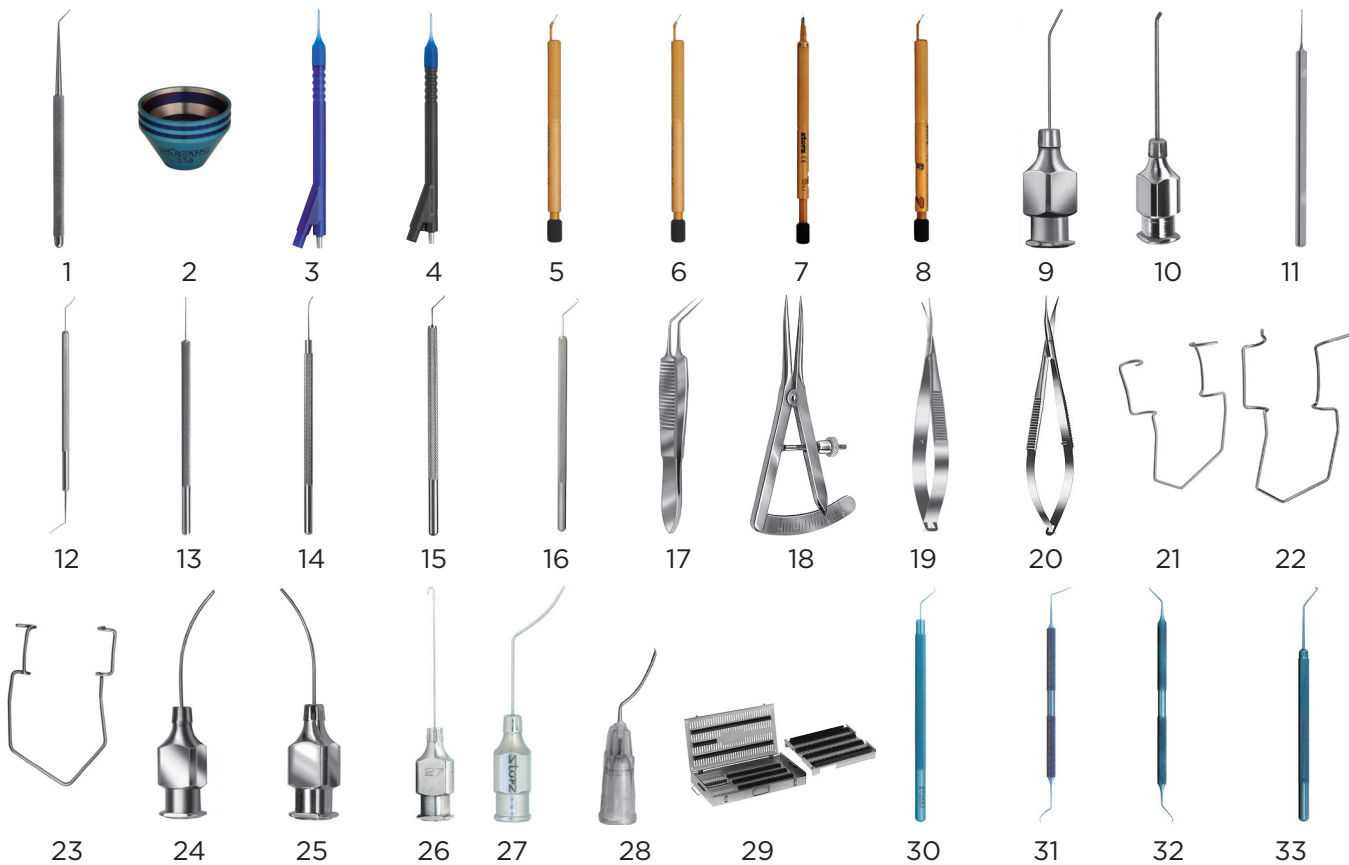


Instrument Sets BY PROCEDURE

Phaco: Chop



NUMBER	DESCRIPTION
1. 6-250	Sinsky Hook II Titanium
2. 6-700	Maloney Keratometer
3. 85910S	CapsuleGuard™ I/A Handpiece MICS Millennium®/Other Systems
4. 85910ST	CapsuleGuard™ I/A Handpiece MICS Stellaris® Systems
5. E0104 ACC2.5	Angled Diamond Keratome 2.5mm
6. E0104 ACC3.0	Angled Diamond Keratome 3.0mm
7. E0108 LS	Osher Trifacet Tunnel Diamond Knife With Footplate
8. E0130 3.0	Profile Angled Diamond Keratome 3.0mm
9. E0499 30	Air Injection Cannula, 30 Gauge
10. E0508	Kratz Capsule Scraper, Sandblasted tip
11. E0567	Kuglen Iris Hook and Lens Manipulator
12. E0570 N	Nichamin Double Ended Nucleus Chopper-Spatula
13. E0571	Lester Lens Manipulator
14. E0712-II	Koch Phacoemulsification Spatula Rounded Tip w/notch
15. E0713	Koch Stop and Chop Manipulator
16. E0747	Micro-Chop Lens Manipulator
17. E2002	Utrata Capsulorhexis Forceps
18. E2404	Castroviejo Caliper

NUMBER	DESCRIPTION
19. E3320 R	Westcott Curved Tenotomy Scissors, Right
20. E3321	Westcott Type Stitch Scissors
21. E4106 K	Kratz-Barraquer Eye Speculum
22. E4106 N	Kratz-Nichamin Speculum
23. E4107 K	Kratz-Barraquer Eye Speculum Pediatric
24. E4413 BAR	Barrett 25 Gauge Hydrodelineation Cannula
25. E4419	Kellan Hydrodissection Cannula
26. E4420	Osher "J" Cannula
27. E4421 H	Nichamin Hydrodissection Cannula, 25 Gauge
28. E7113	Irrigating Cystotome, Formed 25 Gauge, 5/box
29. E7414	Microsurgical Instrument Tray 50-60 Instruments
30. ET0584	Sweeney Manipulator Cracker
31. ET0703	Devgan Universal Cataract Chopper/Multi-Tool
32. ET0735	Wallace Double Ended Guardian/Quick Chopper
33. ET0736	Jewelewicz Rosen Chopper